

SREERAMA GOVERNMENT POLYTECHNIC COLLEGE, TRIPRAYAR

Phone : 0487-2391239

E-mail: srpolyoffice@gmail.com

Website : www.sreeramapoly.ac.in

MANDATORY DISCLOSURE

Mandatory Disclosure updated on	18thFebruary2022
AICTE File No.	South-West/1-9321830076/2021/EOA Date: 25-Jun-2021
AICTE Permanent Institute Id:	1-475251651
Date &Period of last approval	Date:25-Jun-2021,AcademicYear2021-22

1. Institution Details

Name of the Institution	Sreerama Government Polytechnic College, Triprayar
Address of the Institution,	Sreerama Government Polytechnic College, Triprayar Valapad P O, Thrissur -680567
State/ UT	Kerala
Phone number with STD code	0487 2391239
Website	www.sreeramapoly.ac.in
E-mail ID	srpolyoffice@gmail.com

2. Name And Address Of the Trust / Society/Company and the Trustees

NA

3. Name and Address of the Vice Chancellor/ Principal/Director

Abdul Nasser A A
Principal
9495463057 ,9400006440
principal.srgpte@gmail.com
M.Tech

4. Name of the affiliating University/ Board

State Board of Technical Education
Government of Kerala
P.O.,Thiruvananthapuram-695040

<https://www.sbte.kerala.gov.in/>

5. Governance

Members of the Board and their brief background

Dr. Vrinda V Nair
Biju K B – Member(Industry)
K M Nurudheen , - Member(Industry)
MD, Ariance Tools, Edamuttam,TSR
Chandrakumar N A , HOD Computer Engineering
Jayanthi M U , HOD,Civil Engineering

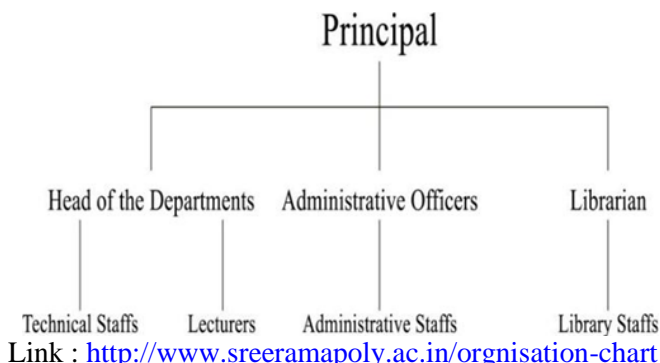
Frequently of the Board Meeting and date of last meeting

As decided by the board

Academic Advisory Body

Abdul Nasser AA - Principal
Chandrakumar N A – HOD in Computer Engineering
Arun C A – HOD in Electronics Engineering
Jayanthi M U – HOD in Civil Engineering
Jesbin K S- HOD in Charge (Mechanical Engineering)
Sakthidharan N K – HOD in Charge(Electrical & Electronics Engineering)
Pradeepan V P – Workshp Superintendent

Organizational chart and processes



Nature and Extent of involvement of Faculty and students in Academic affairs/improvements

Yes

Mechanism/ Norms and Procedure for democratic/ good Governance

Yes

Student Feedback on Institutional Yes , There is an in house mechanism to give feedback about the institutional governance and faculty performance

Grievance Redressal mechanism for Faculty, staff and students

Yes , Various Committees prescribed by AICTE/ Govt/Dept are formed for Grievance redressal for students, faculty and staff.

Chairman - Sri. Abdul Nassar A A, Principal
Convenor - Shri. Pradeepan V P – Workshop Superintendent

Members

Chandrakumar N A - HOD, Computer Engineering
Sakthidharan N K - HOD in charge, Electrical & Electronics Engineering
Jayanthi M U - HOD, Civil Engineering
Arun C A - HOD, Electronics Engineering
Abhijith - HOD in charge, Mechanical Engineering
Dr. Priya Ravinath – Assistant Professor in English
Shri. Shanavas K A – Senior Superintendent

Establishment of Anti Ragging Committee

Chairman - Sri. Abdul Nassar A A, Principal
Convenor - Chandrakumar N A – HOD in Computer Engineering

Members

AjayKumar- Lecturer in Electrical Engineering
Arun C A - HOD in Electronics Engineering
Gayathri G –Lecturer in Civil Engineering
Reena A P – PTA Joint Secretary
Hari V G- Mathrubhoomi Reporter

Sethumadhavan D – Secretary Space, Thriprayar

Establishment of Online Grievance
Redressal Mechanism

Yes

Link : <http://sreeramapoly.ac.in/online-grievance-redressal-portal>

Establishment of Internal Complaint
Committee (ICC)

Chairperson - Smt. M U Jayanthi – HOD in Civil
Engineering

Members

Smt. Indu V Kumar – Lecturer in Computer Engg.
Smt. Lintumol P N – Lecturer in Electronics Engg.
Jinto Francis - Lecturer in Mechanical Engineering
Smt. Bindu K – Clerk
Shri. Sakthidharan N K – Lecturer in Electrical Engg.
Adv. Asha R K – NGO

Students

Swathikrishna - S1 Civil
Devika Vipin - S4 Mechanical
Sreelakshmi T V - S6 EEE
Athulya P K - S1 Electronics
Majitha A B - S4 Computer

Establishment of Committee for SC/ST

Liaison Officer- Sri. Abhijith T S – Lecturer in
Mechanical Engineering

Members

Smt. Girija K G – Lecturer in Electronics Engineering
Smt. Alan Sara P – Lecturer in Civil
Sri. Sakthidharan N K-Lecturer in Electrical Engineering
Sri. Santhosh K M – Lecturer in Computer Engineering
Prasad K S - Senior Clerk

Internal Quality Assurance Cell :

Abdul Nasser AA - Principal
Chandrakumar N A – HOD in Computer Engineering
Arun C A – HOD in Electronics Engineering
Jayanthi M U – HOD in Civil Engineering
Jesbin K S- HOD in Charge (Mechanical Engineering)
Sakthidharan N K – HOD in Charge(Electrical &
Electronics Engineering)

6. Programmes

Name of Programmes approved by AICTE:

1. Diploma In Mechanical Engineering
2. Diploma In Civil Engineering
3. Diploma In Computer Engineering
4. Diploma In Electronics Engineering
5. Diploma In Electrical & Electronics Engineering

Name of Programmes Accredited by AICTE : Nil

Status of Accreditation of the Courses : Preliminary

Details of Programmes

a. Name of the Programme : 3 Year Diploma in Mechanical

Engineering

Year	2021	2020	2019
Sanctioned Intake	60	60	60
Actual Admissions	60	60	60
% Students passed with Distinction	77.9	66.3	61.7
% Students passed with First Class	22.1	43.7	38.3
Students Placed	29	18	14
Average Pay Package Rs./Year	1L-3L	1L-3L	1L-3L

b. Name of the Programme : 3 Year Diploma in Civil Engineering

Year	2021	2020	2019
Sanctioned Intake	60	60	60
Actual Admissions	60	60	60
% Students passed with Distinction	47.8	51.6	45.9
% Students passed with First Class	23.1	31.65	39.3
Students Placed	13	17	25
Average Pay Package Rs./Year	1L-3L	1L-3L	1L-3L

c. Name of the Programme : 3 Year Diploma in Computer Engineering

Year	2021	2020	2019
Sanctioned Intake	60	60	60
Actual Admissions	60	60	60
% Students passed with Distinction	16	23	20
% Students passed with First Class	55	26	20
Students Placed	56	3	3
Average Pay Package Rs./Year	1L-3L	1L-3L	1L-3L

d. Name of the Programme : 3 Year Diploma in Electrical & Electronics Engineering

Year	2021	2020	2019
Sanctioned Intake	60	60	60
Actual Admissions	60	60	60
% Students passed with Distinction	47.8	51.6	45.9
% Students passed with First Class	23.1	31.65	39.3

Students Placed	13	17	25
Average Pay Package Rs./Year	1L- 3L	1L-3L	1L-3L

e. Name of the Programme : 3 Year Diploma in Electronics Engineering

Year	2021	2020	2019
Sanctioned Intake	60	60	60
Actual Admissions	60	60	60
% Students passed with Distinction	2	7	10
% Students passed with First Class	18	2	20
Students Placed	1	5	3
Average Pay Package Rs./Year			

Collaboration with foreign universities:

Nil

6. Faculty

Branch wise list of Faculty members

Department of Mechanical Engineering - Permanent Faculty

Name : Sri. Jesbin
Designation : HOD in charge
Qualification : M.Tech

Name : Sri. Abhijith
Designation : Lecturer in Mechanical Engineering
Qualification : M.Tech

Name : Sri. Jinto Francis
Designation : Lecturer in Mechanical Engg.
Qualification : B.Tech

Name : Sri. Shiju Varghese
Designation : Lecturer in Mechanical Engineering
Qualification : M.Tech

Permanent Faculty to Student ratio 1:25

Department of Civil Engineering - Permanent Faculty

Name : Sri. Jayanthi M U
Designation : Head of the Department
Qualification : M.Tech

Name : Sri. Gayathri
Designation : Lecturer in Civil Engineering
Qualification : M.Tech

Name : Sri. Sruthy
Designation : Lecturer in Civil Engineering
Qualification : M.Tech

Name : Sri. Alan Sara
Designation : Lecturer in Civil Engineering
Qualification : M.Tech

Name : Sri. Jumi James
Designation : Lecturer in Civil Engineering
Qualification : M.Tech

Permanent Faculty to Student ratio 1:25

Department of Computer Engineering - Permanent Faculty

Name : Sri. Chandrakumar N A
Designation : Head of the Department
Qualification : M.Tech

Name : Sri. Shejin T R
Designation : Lecturer in Computer Engineering
Qualification : M.Tech

Name : Smt. Sreeja M K
Designation : Lecturer in Computer Engineering
Qualification : M.Tech

Name : Smt. Indu V Kumar
Designation : Lecturer in Computer Engineering
Qualification : M.Tech

Name : Sri. Santhosh K M
Designation : Lecturer in Computer Engineering
Qualification : M.Tech

Name : Smt. Neena M K
Designation : Lecturer in Computer Engineering
Qualification : M.Tech

Permanent Faculty to Student ratio 1:25

Department of Electronics Engineering - Permanent Faculty

Name	: Sri. Arun C A
Designation	: Head of the Department
Qualification	: B.Tech
Name	: Smt. Lila T M
Designation	: Lecturer in Electronics Engineering
Qualification	: B.Tech
Name	: Smt. Lintumol N
Designation	: Lecturer in Electronics Engineering
Qualification	: M.Tech
Name	: Smt. Girija
Designation	: Lecturer in Electronics Engineering
Qualification	: M.Tech
Name	: Sri. Reena
Designation	: Lecturer in Electronics Engineering
Qualification	: M.Tech

Permanent Faculty to Student ratio 1:25

General Department - Permanent Faculty

Name	: Dr. Priya Ravinath
Designation	: Assistant Professor of English
Qualification	: MA, B.Ed, UGC-NET,PHD
Name	: Smt. Sreerekha P
Designation	: Assistant Professor of Mathematics
Qualification	: M.Sc., B.Ed., UGC-NET
Name	: Smt. Sabitha K S
Designation	: Assistant Professor of Mathematics
Qualification	: M.Sc., B.Ed., UGC-NET
Name	: Dr. Seena Thomachan
Designation	: Assistant Professor of Chemistry
Qualification	: M.Phil, UGC-NET, PHD
Name	: Sri. Sam Kumar
Designation	: Assistant Professor of Physics
Qualification	: M.Sc, UGC-NET

7. Profile

(a) Principal : <http://sreeramapoly.ac.in/staff/administrative-staff/>

(b) Mechanical Engineering Faculty : <http://sreeramapoly.ac.in/staff/mechanical-engineering/>

- (c) Civil Engineering Faculty : <http://sreeramapoly.ac.in/staff/civil-engineering/>
- (d) Computer Engineering Faculty : <http://sreeramapoly.ac.in/departmentprofile/computer-engineering/staff-profile/>
- (e) Electronics Engineering Faculty : <http://sreeramapoly.ac.in/staff/electronics-engineering/>
- (f) Electrical & Electronics Engineering Faculty : <http://sreeramapoly.ac.in/staff/electrical-and-electronics-engineering/>

8. Fees

Admission Fee	Rs 210	(At the time of Admission)	
Tuition Fee	Rs 790	(Every Semester)	
Special Fee	Rs 740	(Every Year, at the beginning of odd semester)	
P.D.	Rs 600	(Every Year, at the beginning of odd semester)	
Students Amenities Fee	Rs 350	(Every Year, at the beginning of odd semester)	
Caution Deposit	Rs 500	(At the time of Admission)	
Number of students	2021	2020	2019
Fee Waivers offered	12	12	12

9. Admission

Admission details

a) Name of the Programme: 3 Year Diploma in Mechanical Engineering

Year	2019	2020	2021
Sanctioned Intake	60	60	60
Actual Admissions	60	60	60

b) Name of the Programme: 3 Year Diploma in Electrical & Electronics Engineering

Year	2019	2020	2021
Sanctioned Intake	60	60	60
Actual Admissions	60	60	60

c) Name of the Programme 3 Year Diploma in Civil Engineering

Year	2019	2020	2021
Sanctioned Intake	60	60	60
Actual Admissions	60	60	60

d) Name of the Programme 3 Year Diploma in Computer Engineering

Year	2019	2020	2021
Sanctioned Intake	60	60	60
Actual Admissions	60	60	60

e) Name of the Programme 3 Year Diploma in Electronics Engineering

Year	2019	2020	2021
Sanctioned Intake	60	60	60
Actual Admissions	60	60	60

Admission Procedure

Admission to various polytechnic colleges in the state through a Single Window Admission System.

For Prospectus and other details visit:

<http://www.polyadmission.org>

Criteria and Weightages for Admission

For details visit: <https://www.polyadmission.org/files/prospectus-2021-en.pdf>

List of Applicants

RankList available in <http://www.polyadmission.org>

15. Information of Infrastructure and Other Resources available

- Number of Classrooms and size of each : Detailed description shown in Table 1.
- Number of Tutorial Rooms : Detailed description shown in Table 1.
- Number of Laboratories and size of each : Detailed description shown in Table 1.
- Number Of Drawing Halls and capacity Of each :Detailed description shown in Table 1.
- Number of computer centers and capacity of each: Detailed description shown in Table 1.
- Central Examination Facility ,Number of rooms and capacity of each :Detailed description shown in Table 1.

Table 1

Room No.	Room type. Mention Class Room/ Laboratory/ Toilet etc	Carpet Area in m ²	Completion of Flooring	Completion of walls and Painting	Completion of Electrification and Lighting
100	Office all Inclusive	151.55	Yes	Yes	Yes
101	Principal Directors Office	40.88	Yes	Yes	Yes
102	Faculty Room	63.15	Yes	Yes	Yes
104	Faculty Room	85.41	Yes	Yes	Yes

105	Cabin For head of Department	18.61	Yes	Yes	Yes
107	Exam control Office	61.32	Yes	Yes	Yes
111	Placement Office	83.05	Yes	Yes	Yes
112A	House Keeping	5.64	Yes	Yes	Yes
114	House Keeping	5	Yes	Yes	Yes
119	Cabin For Head Of Department	19.93	Yes	Yes	Yes
120	Central Store	54.31	Yes	Yes	Yes
126	Pantry for Staff	14.59	Yes	Yes	Yes
130	Board Room	57	Yes	Yes	Yes
140	Security	10	Yes	Yes	Yes
142	Faculty Room	27.6	Yes	Yes	Yes
144	Cabin for Head Of Department	27.6	Yes	Yes	Yes
208	Cabin for Head Of Department	15.23	Yes	Yes	Yes
215	Maintenance	18.12	Yes	Yes	Yes
222	Cabin for Head Of Department	19.93	Yes	Yes	Yes
230	Other (Guidance & Counselling)	24.5	Yes	Yes	Yes
305	Cabin for Head Of Department	19.93	Yes	Yes	Yes
103	Laboratory	94.54	Yes	Yes	Yes
110	Laboratory	40.88	Yes	Yes	Yes
112	Laboratory	93.89	Yes	Yes	Yes
115	Class Room	85.91	Yes	Yes	Yes
116	Class Room	85.91	Yes	Yes	Yes
117	Class Room	85.91	Yes	Yes	Yes
118	Class Room	85.91	Yes	Yes	Yes
121	Laboratory	114.51	Yes	Yes	Yes
124	Laboratory	110.18	Yes	Yes	Yes
125	Laboratory	52.09	Yes	Yes	Yes
128	Laboratory	58.6	Yes	Yes	Yes
136	Workshop	406.3	Yes	Yes	Yes
136A	Additional Workshop	207.42	Yes	Yes	Yes
137	Laboratory	254.35	Yes	Yes	Yes
138	Laboratory	84.79	Yes	Yes	Yes
138A	Laboratory	84.79	Yes	Yes	Yes
138B	Laboratory	84.79	Yes	Yes	Yes

141	Seminar hall	97.7	Yes	Yes	Yes
143	Laboratory	140	Yes	Yes	Yes
143A	Laboratory	147.28	Yes	Yes	Yes
145	Laboratory	130	Yes	Yes	Yes
145A	Laboratory	127.8	Yes	Yes	Yes
145B	Laboratory	30	Yes	Yes	Yes
146	Laboratory	69.35	Yes	Yes	Yes
147	Laboratory	69.35	Yes	Yes	Yes
148	Seminar Hall	442.55	Yes	Yes	Yes
198	Laboratory	85	Yes	Yes	Yes
201	Laboratory	84.14	Yes	Yes	Yes
202	Laboratory	42.55	Yes	Yes	Yes
203	Class Room	64.75	Yes	Yes	Yes
205	Tutorial Room	47.84	Yes	Yes	Yes
206	Laboratory	47.95	Yes	Yes	Yes
207	Class Room	87.09	Yes	Yes	Yes
216	Laboratory	87.32	Yes	Yes	Yes
217	Tutorial Room	42	Yes	Yes	Yes
217A	Tutorial Room	42	Yes	Yes	Yes
218	Class Room	85.91	Yes	Yes	Yes
219	Class Room	85.91	Yes	Yes	Yes
220	Class Room	85.91	Yes	Yes	Yes
221	Class Room	85.91	Yes	Yes	Yes
223	Laboratory	58.6	Yes	Yes	Yes
225	Laboratory	123	Yes	Yes	Yes
229	Laboratory	36	Yes	Yes	Yes
231	Laboratory	69.35	Yes	Yes	Yes
232	Laboratory	69.35	Yes	Yes	Yes
301	<u>Class Room</u>	85.91	Yes	Yes	Yes
302	Drawing hall	173.28	Yes	Yes	Yes
304	Class Room	85.91	Yes	Yes	Yes
106	Computer Center	129.21	Yes	Yes	Yes
210	Library and Reading Room	353.22	Yes	Yes	Yes
226	Computer Center	56.7	Yes	Yes	Yes
228	Language Laboratory	71	Yes	Yes	Yes
100A	Toilet	3.96	Yes	Yes	Yes
102A	Toilet	4.5	Yes	Yes	Yes

106A	Toilet	5.25	Yes	Yes	Yes
107A	Toilet	8.64	Yes	Yes	Yes
111A	Toilet	18.34	Yes	Yes	Yes
119A	Toilet	19	Yes	Yes	Yes
122	Cafeteria	92.74	Yes	Yes	Yes
127	Stationary Store	14.49	Yes	Yes	Yes
129	Toilet	4.2	Yes	Yes	Yes
131	Girls Common Room	40.34	Yes	Yes	Yes
131A	Toilet	23	Yes	Yes	Yes
134	Boys Common Room	56.7	Yes	Yes	Yes
135	Boys Common Room	56.7	Yes	Yes	Yes
136B	Toilet	3.5	Yes	Yes	Yes
137B	Toilet	3	Yes	Yes	Yes
138D	Toilet	3	Yes	Yes	Yes
139	Cafeteria	117.92	Yes	Yes	Yes
141A	First Aid Cum Sick Room	28.56	Yes	Yes	Yes
141E	Toilet	20.2	Yes	Yes	Yes
141F	Toilet	7.68	Yes	Yes	Yes
148	Auditorium	442.55	Yes	Yes	Yes
210A	Toilet	3.12	Yes	Yes	Yes
222A	Toilet	19	Yes	Yes	Yes
227	Girls Common Room	56.7	Yes	Yes	Yes
305A	Toilet	19	Yes	Yes	Yes
400	<u>Boys Hostel</u>	2029.74	Yes	Yes	Yes
401	Principal Quarters	137	Yes	Yes	Yes
402	Others (Staff Quarters)	1306	Yes	Yes	Yes

Online examination Facility (Number Of Nodes ,

Internet Bandwidth

: 150, 100MPbs

Barrier Free Built Environment for disabled
and elderly persons: Available

Occupancy Certificate

: Available

Fire and Safety

: Certificate Available

Hostel Facilities

Boys Hostel

: Available

Girls Hostel

: No

Library

Facility

: Computerised with Koha Library Management

Number of Titles

2833

No of Volumes

9691

No of National Journals	15
No.of International Journals	3
E- Library facilities	:Available

Computing Facilities

Internet Bandwidth	:240Mbps
Number of System	165
Total number of system connected by LAN	165

- **Laboratory and Workshop**

- Number Of Major equipment's/ Facilities in each Laboratory/Workshop

Basic Mechanical Engineering	Engine Ac Refrigerator Centrifugal Pump Hydraulic Jack Soldering And Bracing Plumbing
Language Lab	Desktop Computer Microphone, Headset
Networking / Tbi Lab	Desktop Computer Laptop
Pneumatics Lab	Pneumatic Test Rig Pnumo Tutor
Construction Practice And Concrete Lab	Slump Test Equipment Vicat'S Apparetus Mixer Machine Compaction Factor Test Machine
Electrical Machine Lab	Motor Generator Set Slipring Induction Motor Squirrel Cage Induction Motor Motor Generator, Meters
Material Testing Lab	Universal Testing Machine Torsion Testing Machine Impact Test Machine Compression, Testing Machine
Networking / Tbi Lab	Desktop Computer Laptop
Electrical Measurement Lab	Three Phase Auto Transformer Single Phase Auto Transformer 1 Kva Trasformer Meters
Electrical Workshop	Three Phase Starter Simulation Board Drilling Machine Earth Tester Kit Three Phase Induction, Motor
Electronics Lab Ii	Analog Cro Digital Storage, Occilloscope
General Workshiop	Drilling Machine Blower Bandsaw Cutting Machine Woodworking,Lathe
Geotech Lab	Liquid Limit Apparetus Is Sieve Set Light Compaction Shrinkage, Limit
Environmental Lab	Fridge Weighing Machine Turbidity Meter Ph Meter Oven And Furnace
Electronics Workshop	Computer System, Soldering Station
Hardware Lab I	Processors Motherboard Harddisk Memory Cabinet With, Smps
Hardware Lab Ii	Desktop Computer Printer
Heat Engine Lab	Air Compressor Diesel Engine Test Rig Refrigeration Test Rig Petrol Engine Test Rig
Hydraulics Machinery Lab	Pelton Wheel Francis Turbine Centrifugal Pump Reciprocating Pump Gear Pump Hydraulic Ram
Industrial Automation Lab	Computer, Plc Kit
Industrial Maintenance And Servicing Lab	Automobile Transm. Engine Gear Box Clutch Differential Chasis

	Flaring Tool Different Guages
Electronics Lab I	Cathode Ray Oscilloscope,Function Generator, Digital Storage Oscilloscope
Hydraulics Lab	Orifice,Mouth Piece Open Channel, Pipe Friction Testing Apparatus,Bernoulli's, Venturi Meter
Digital Electronics Lab	Digital Ic Trainer Ic Tester, Multimeter
Common Computing Facility Lab I	Desktop Computers Ups Lcd, Projector Printer
Common Computing Facility Lab II	Desktop Computers Ups Lcd, Projector Printer
Civil Cadd Lab	Desktop Computer, Printer
Survey Lab	Total Station Theodolite Dumpy Level
Cadd Lab	Computers, Printer
Chemistry Lab	Burette Pipette Conical Flask
Physics Lab	Resonance Apparatus Simple Pendulum Screw Gauge Vernier Calipers
Software Lab	Personal Computer, Ups,Embedded System Kit, Vlsi Fpga Kit, Micro Controller Kit
Software Lab I	Desktop Computer,Laser Jet Printer, Scanner, Ups, Laptop Computer, Lcd Projector, Netbook Computer

- Computing Facilities**

Internet Bandwidth	:100Mbps
Number& configuration of System	165
Total number of system connected byLAN	165

Major software packages available

System Software	: GNU/LINUX, gcc, g++,Java, Python
Application Software	: Libre Office Writer, calc, impress, MySql, Postgres, Eclipse, Net beans, Nasm, GIMP, Vi Editor, Emacs, Koha, Apache, Tomcat, Openshot, Blender, Firefox, Chromium, VLC,GNU debugger

InnovationCell

Innovation and Entrepreneurship Development Club (IEDC)	:IEDC Cell guides and assists students for attaining project approvals and facilities from agencies of support system
---	---

Social Media Cell

: Yes

Compliance of National Academic Depository,applicable to PDCM/PGDM institutions and university departments.

- List of facilities available**

Games and Sports Facilities	: Gym ,Table Tennis Board
Outdoor sports facilities are available	:Ball Badminton court, Shuttle Court, Volleyball Court
Extra-CurricularActivities	:National Service Scheme(NSS)activities College Arts and Sports Festival Inter Polytechnic Arts and Sport Festival
Soft Skill Development Facilities	:Finishing School Programme, Visiting

Faculty Programme and Career
Guidance and Placement Cell facilitate the soft
skill development of students

- **Teaching Learning Process**

Civil Engineering <https://sitttrkerala.ac.in/index.php?r=site%2Fdiploma-syllabus-courses&prog=CE>

Mechanical Engineering <https://sitttrkerala.ac.in/index.php?r=site%2Fdiploma-syllabus-courses&prog=ME>

Computer Engineering <https://sitttrkerala.ac.in/index.php?r=site%2Fdiploma-syllabus-courses&prog=CT>

Electronics Engineering <https://sitttrkerala.ac.in/index.php?r=site%2Fdiploma-syllabus-courses&prog=EL>

Electrical & Electronics Engineering
<https://sitttrkerala.ac.in/index.php?r=site%2Fdiploma-syllabus-courses&prog=EE>

Academic Calendar of the University <http://www.sitttrkerala.ac.in/index.php?r=site%2Fhome>

Internal Continuous Evaluation System :Available
Student's assessment of Faculty, System in place :Feedback

16. Enrolment of students in the last 3 years 2020-2021 2019-2020 2018-2019

17. List Of Research Projects/

18. LoA and subsequent EoA till the current Academic Year <http://sreeramapoly.ac.in/eoa>

19. Accounted audited statement for the last three years.

20. Best Practices adopted, if any.
